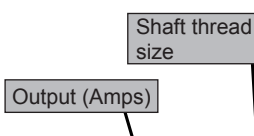



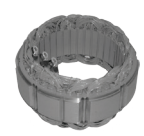

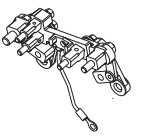


Group:	AC172RA / AC172TRA Alternators	Notes:
Form:	SP4007_AC172RA-TRA_Series	Service parts & kits listing. (AC172TRA & AC172RA)
Date:	November 7, 2017 (Rev: 1)	New TRA rotor, M27 shaft thread.
File:	Service parts list section	New pulley retention kit.




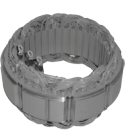

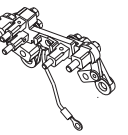
Component View			Front housing	Rear housing	Rotor	Stator	Rectifier assembly	Terminal assembly <sup>(1)</sup>
								
Part number	Features		1	2	3	4	5	6
1277640	140A	M24	6360-340	6360-342	6332-A1487	6332-A1488	6360-345	-
1277A640	155A	M24	6360-340	6360-449	6332-A1501	6332-A1500	6360-345	-
1277A640	155A	M27	6360-340	6360-449	6332-A1510	6332-A1500	6360-345	-
1277650	140A	M24	6360-340	6360-342	6332-A1487	6332-A1488	6360-345	-
1277A650	155A	M24	6360-340	6360-449	6332-A1501	6332-A1500	6360-345	-
1277A650	155A	M27	6360-340	6360-449	6332-A1510	6332-A1500	6360-345	-
1277670	140A	M24	6360-392	6360-342	6332-A1487	6332-A1488	6360-345	-
1277A670	155A	M24	6360-392	6360-449	6332-A1501	6332-A1500	6360-345	-
1277A670	155A	M27	6360-392	6360-449	6332-A1510	6332-A1500	6360-345	-
1277680	140A	M24	6360-392	6360-394	6332-A1487	6332-A1488	6360-345	-
1277A680	155A	M24	6360-392	6360-456	6332-A1501	6332-A1500	6360-345	-
1277A680	155A	M27	6360-392	6360-456	6332-A1510	6332-A1500	6360-345	-
1277690	140A	M24	6360-393	6360-342	6332-A1487	6332-A1488	6360-345	-
1277A690	155A	M24	6360-393	6360-449	6332-A1501	6332-A1500	6360-345	-
1277A690	155A	M27	6360-393	6360-449	6332-A1510	6332-A1500	6360-345	-
1277700	140A	M24	6360-392	6360-394	6332-A1487	6332-A1488	6360-345	-
1277A700	155A	M24	6360-392	6360-456	6332-A1501	6332-A1500	6360-345	-
1277A700	155A	M27	6360-392	6360-456	6332-A1510	6332-A1500	6360-345	-
1277710	140A	M24	6360-392	6360-342	6332-A1487	6332-A1488	6360-345	-
1277A710	155A	M24	6360-392	6360-449	6332-A1501	6332-A1500	6360-345	-
1277A710	155A	M27	6360-392	6360-449	6332-A1510	6332-A1500	6360-345	-
1277720	140A	M24	6360-340	6360-394	6332-A1487	6332-A1488	6360-345	-
1277A720	155A	M24	6360-340	6360-456	6332-A1501	6332-A1500	6360-345	-
1277A720	155A	M27	6360-340	6360-456	6332-A1510	6332-A1500	6360-345	-
1277730	140A	M24	6360-411	6360-413	6332-A1493	6332-A1488	6360-420	6360-419
1277A730	155A	M24	6360-411	6360-487	6332-A1503	6332-A1500	6360-420	6360-419
1277740	140A	M24	6360-411	6360-413	6332-A1493	6332-A1488	6360-420	6360-419
1277A740	155A	M24	6360-411	6360-487	6332-A1503	6332-A1500	6360-420	6360-419
1277750	140A	M24	6360-392	6360-394	6332-A1487	6332-A1488	6360-345	-
1277A750	155A	M24	6360-392	6360-456	6332-A1501	6332-A1500	6360-345	-
1277A750	155A	M27	6360-392	6360-456	6332-A1510	6332-A1500	6360-345	-
1277760	140A	M24	6360-340	6360-394	6332-A1487	6332-A1488	6360-345	-
1277A760	155A	M24	6360-340	6360-456	6332-A1501	6332-A1500	6360-345	-
1277A760	155A	M27	6360-340	6360-456	6332-A1510	6332-A1500	6360-345	-

**Note:**

- Terminal assembly (item 6) is available as individual component for 1277730, 1277A730, 1277740, 1277A740, 1277810, 1277820 and 1277830 only. Rectifier assembly (item 5) includes heatsink assembly and terminal assembly for all listed alternators.
- Fitting kit instruction for 860340, see TSB4027.

Important: The information contained in this bulletin is intended for use by trained, professional technicians who have the proper tools, equipment, and training to perform the required maintenance described above. This information is NOT intended for 'do-it-yourselfers', and you should not assume that this information applies to your equipment. If you have any questions regarding this information please visit our website at [www.prestolite.com](http://www.prestolite.com), or contact our technical service department at:

Group:	AC172RA / AC172TRA Alternators	Notes:
Form:	SP4007_AC172RA-TRA_Series	Service parts & kits listing. (AC172TRA & AC172RA)
Date:	November 7, 2017 (Rev: 1)	New TRA rotor, M27 shaft thread.
File:	Service parts list section	New pulley retention kit.

Component View			Front housing	Rear housing	Rotor	Stator	Rectifier assembly	Terminal <sup>(1)</sup> assembly
								
Part number	Features		1	2	3	4	5	6
1277810	140A	M24	6360-411	6360-413	6332-A1493	6332-A1488	6360-461	6360-460
1277820	140A	M24	6360-411	6360-413	6332-A1493	6332-A1488	6360-461	6360-460
1277830	140A	M24	6360-392	6360-394	6332-A1487	6332-A1488	6360-470	6360-469
1277840	140A	M24	6360-474	6360-342	6332-A1487	6332-A1488	6360-345	-
1277A840	155A	M24	6360-474	6360-449	6332-A1501	6332-A1500	6360-345	-
1277A840	155A	M27	6360-474	6360-449	6332-A1510	6332-A1500	6360-345	-
1277860	140A	M24	6360-340	6360-342	6332-A1487	6332-A1488	6360-345	-
1277A860	155A	M24	6360-340	6360-449	6332-A1501	6332-A1500	6360-345	-
1277A860	155A	M27	6360-340	6360-449	6332-A1510	6332-A1500	6360-345	-
1277A870	155A	M24	6360-393	6360-456	6332-A1501	6332-A1500A	6360-345A	-
1277A880	155A	M24	6360-340	6360-456	6332-A1501	6332-A1500A	6360-345A	-
1277A890	155A	M24	6360-340	6360-449	6332-A1501	6332-A1500A	6360-345A	-
860340 <sup>(2)</sup>	140A	M24	6360-392	6360-394	6332-A1487	6332-A1488	6360-345	-
860340 <sup>(2)</sup>	155A	M24	6360-392	6360-456	6332-A1501	6332-A1500	6360-345	-
860340 <sup>(2)</sup>	155A	M27	6360-392	6360-456	6332-A1510	6332-A1500	6360-345	-

### Note:







1. Terminal assembly (item 6) is available as individual component for 1277730, 1277A730, 1277740, 1277A740, 1277810, 1277820 and 1277830 only. Rectifier assembly (item 5) includes heatsink assembly and terminal assembly for all listed alternators.
2. Fitting kit instruction for 860340, see TSB4027.

Important: The information contained in this bulletin is intended for use by trained, professional technicians who have the proper tools, equipment, and training to perform the required maintenance described above. This information is NOT intended for 'do-it-yourselfers', and you should not assume that this information applies to your equipment. If you have any questions regarding this information please visit our website at [www.prestolite.com](http://www.prestolite.com), or contact our technical service department at:

Prestolite Electric Ltd  
Unit 48, The Metropolitan Park  
12-16 Bristol Road, Greenford,  
Middlesex  
UB6 8UP, United Kingdom

Tel: +44 (0) 20 8231 1000  
Fax: +44 (0) 20 8575 9575  
[eu\\_info@prestolite.com](mailto:eu_info@prestolite.com)

Group:	AC172RA / AC172TRA Alternators	Notes:
Form:	SP4007_AC172RA-TRA_Series	Service parts & kits listing. (AC172TRA & AC172RA)
Date:	November 7, 2017 (Rev: 1)	New TRA rotor, M27 shaft thread.
File:	Service parts list section	New pulley retention kit.







Component View			Regulator	Brush kit	Bearing kit	Cover kit	Pulley retention kit	Hardware kit
								
Part number	Features		7	8	9	10	11	12
1277640	140A	M24	1861760	6360-409D	6360-523	6360-524	6360-531	6360-528
1277A640	155A	M24	1861762	6360-530	6360-523	6360-527	6360-531	6360-528
1277A640	155A	M27	1861762	6360-530	6360-523	6360-527	6360-531A	6360-528
1277650	140A	M24	1861760	6360-409D	6360-523	6360-524	6360-531	6360-528
1277A650	155A	M24	1861762	6360-530	6360-523	6360-527	6360-531	6360-528
1277A650	155A	M27	1861762	6360-530	6360-523	6360-527	6360-531A	6360-528
1277670	140A	M24	1861760	6360-409D	6360-523	6360-524	6360-531	6360-528
1277A670	155A	M24	1861762	6360-530	6360-523	6360-527	6360-531	6360-528
1277A670	155A	M27	1861762	6360-530	6360-523	6360-527	6360-531A	6360-528
1277680	140A	M24	1861761	6360-409D	6360-523	6360-524	6360-531	6360-528
1277A680	155A	M24	1861763	6360-530	6360-523	6360-527	6360-531	6360-528
1277A680	155A	M27	1861763	6360-530	6360-523	6360-527	6360-531A	6360-528
1277690	140A	M24	1861760	6360-409D	6360-523	6360-524	6360-531	6360-528
1277A690	155A	M24	1861762	6360-530	6360-523	6360-527	6360-531	6360-528
1277A690	155A	M27	1861762	6360-530	6360-523	6360-527	6360-531A	6360-528
1277700	140A	M24	1861760	6360-409D	6360-523	6360-524	6360-531	6360-528
1277A700	155A	M24	1861762	6360-530	6360-523	6360-527	6360-531	6360-528
1277A700	155A	M27	1861762	6360-530	6360-523	6360-527	6360-531A	6360-528
1277710	140A	M24	1861761	6360-409D	6360-523	6360-524	6360-531	6360-528
1277A710	155A	M24	1861763	6360-530	6360-523	6360-527	6360-531	6360-528
1277A710	155A	M27	1861763	6360-530	6360-523	6360-527	6360-531A	6360-528
1277720	140A	M24	1861760	6360-409D	6360-523	6360-524	6360-531	6360-528
1277A720	155A	M24	1861762	6360-530	6360-523	6360-527	6360-531	6360-528
1277A720	155A	M27	1861762	6360-530	6360-523	6360-527	6360-531A	6360-528
1277730	140A	M24	1861770	6360-409D	6360-523	6360-525	6360-531	6360-529
1277A730	155A	M24	1861774	6360-530	6360-523	6360-525	6360-531	6360-529
1277740	140A	M24	1861770	6360-409D	6360-523	6360-525	6360-531	6360-529
1277A740	155A	M24	1861774	6360-530	6360-523	6360-525	6360-531	6360-529
1277750	140A	M24	1861760	6360-409D	6360-523	6360-524	6360-531	6360-528
1277A750	155A	M24	1861762	6360-530	6360-523	6360-527	6360-531	6360-528
1277A750	155A	M27	1861762	6360-530	6360-523	6360-527	6360-531A	6360-528
1277760	140A	M24	1861761	6360-409D	6360-523	6360-524	6360-531	6360-528
1277A760	155A	M24	1861763	6360-530	6360-523	6360-527	6360-531	6360-528
1277A760	155A	M27	1861763	6360-530	6360-523	6360-527	6360-531A	6360-528


**Note:**

- Terminal assembly (item 6) is available as individual component for 1277730, 1277A730, 1277740, 1277A740, 1277810, 1277820 and 1277830 only. Rectifier assembly (item 5) includes heatsink assembly and terminal assembly for all listed alternators.
- Fitting kit instruction for 860340, see TSB4027.

Important: The information contained in this bulletin is intended for use by trained, professional technicians who have the proper tools, equipment, and training to perform the required maintenance described above. This information is NOT intended for 'do-it-yourselfers', and you should not assume that this information applies to your equipment. If you have any questions regarding this information please visit our website at [www.prestolite.com](http://www.prestolite.com), or contact our technical service department at:

Group:	AC172RA / AC172TRA Alternators	Notes:
Form:	SP4007_AC172RA-TRA_Series	Service parts & kits listing. (AC172TRA & AC172RA)
Date:	November 7, 2017 (Rev: 1)	New TRA rotor, M27 shaft thread.
File:	Service parts list section	New pulley retention kit.

Component View			Regulator	Brush kit	Bearing kit	Cover kit	Pulley retention kit	Hardware kit
								
Part number	Features		7	8	9	10	11	12
1277810	140A	M24	1861772	6360-409D	6360-523	6360-526	6360-531	6360-529
1277820	140A	M24	1861772	6360-409D	6360-523	6360-526	6360-531	6360-529
1277830	140A	M24	6516-1	6360-409D	6360-523	6360-473	6360-531	6360-528
1277840	140A	M24	1861760	6360-409D	6360-523	6360-524	6360-531	6360-528
1277A840	155A	M24	1861762	6360-530	6360-523	6360-527	6360-531	6360-528
1277A840	155A	M27	1861762	6360-530	6360-523	6360-527	6360-531A	6360-528
1277860	140A	M24	1861761	6360-409D	6360-523	6360-524	6360-531	6360-528
1277A860	155A	M24	1861763	6360-530	6360-523	6360-527	6360-531	6360-528
1277A860	155A	M27	1861763	6360-530	6360-523	6360-527	6360-531A	6360-528
1277A870	155A	M24	1861763	6360-530	6360-523	6360-454*	6360-531	6360-528
1277A880	155A	M24	1861763	6360-530	6360-523	6360-454*	6360-531	6360-528
1277A890	155A	M24	1861763	6360-530	6360-523	6360-454*	6360-531	6360-528
860340 <sup>(2)</sup>	140A	M24	1861760	6360-409D	6360-523	6360-524	6360-531	6360-528
860340 <sup>(2)</sup>	155A	M24	1861762	6360-530	6360-523	6360-527	6360-531	6360-528
860340 <sup>(2)</sup>	155A	M27	1861762	6360-530	6360-523	6360-527	6360-531A	6360-528

Component View			Fan
			
Part number	Features		13
All variants	140A	M24	6360-254
	155A	M24	
	155A	M27	

#### Note:

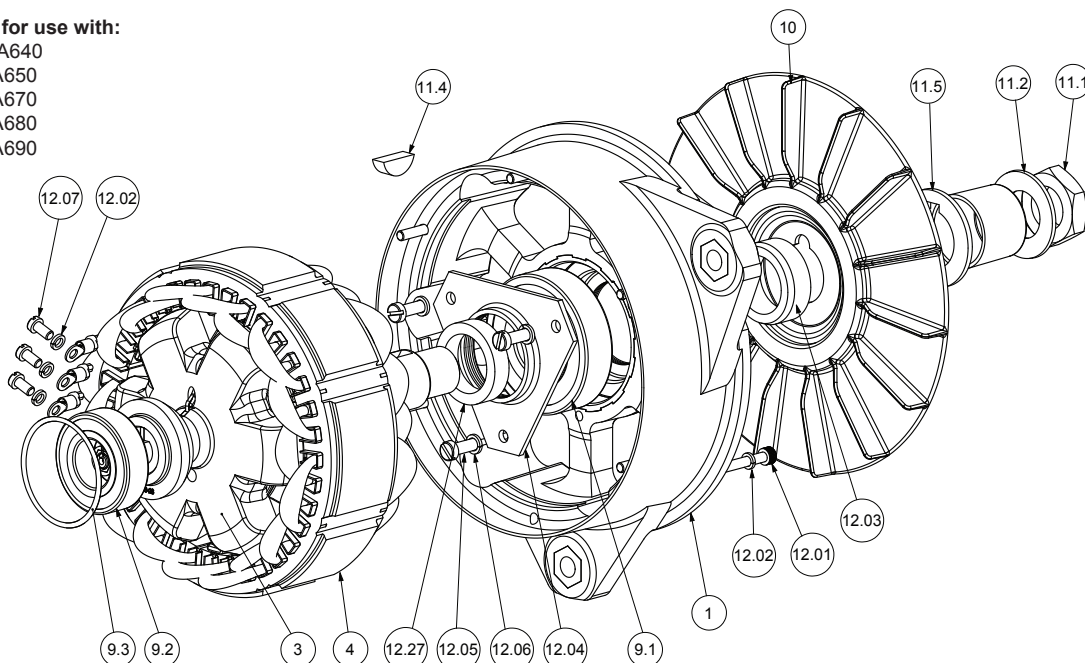
- Terminal assembly (item 6) is available as individual component for 1277730, 1277A730, 1277740, 1277A740, 1277810, 1277820 and 1277830 only. Rectifier assembly (item 5) includes heatsink assembly and terminal assembly for all listed alternators.
- Fitting kit instruction for 860340, see TSB4027.

Important: The information contained in this bulletin is intended for use by trained, professional technicians who have the proper tools, equipment, and training to perform the required maintenance described above. This information is NOT intended for 'do-it-yourselfers', and you should not assume that this information applies to your equipment. If you have any questions regarding this information please visit our website at [www.prestolite.com](http://www.prestolite.com), or contact our technical service department at:

Group:	AC172RA / AC172TRA Alternators	Notes:
Form:	SP4007_AC172RA-TRA_Series	AC172TRA major parts and components exploded view.
Date:	November 7, 2017 (Rev: 1)	
File:	Service parts list section	

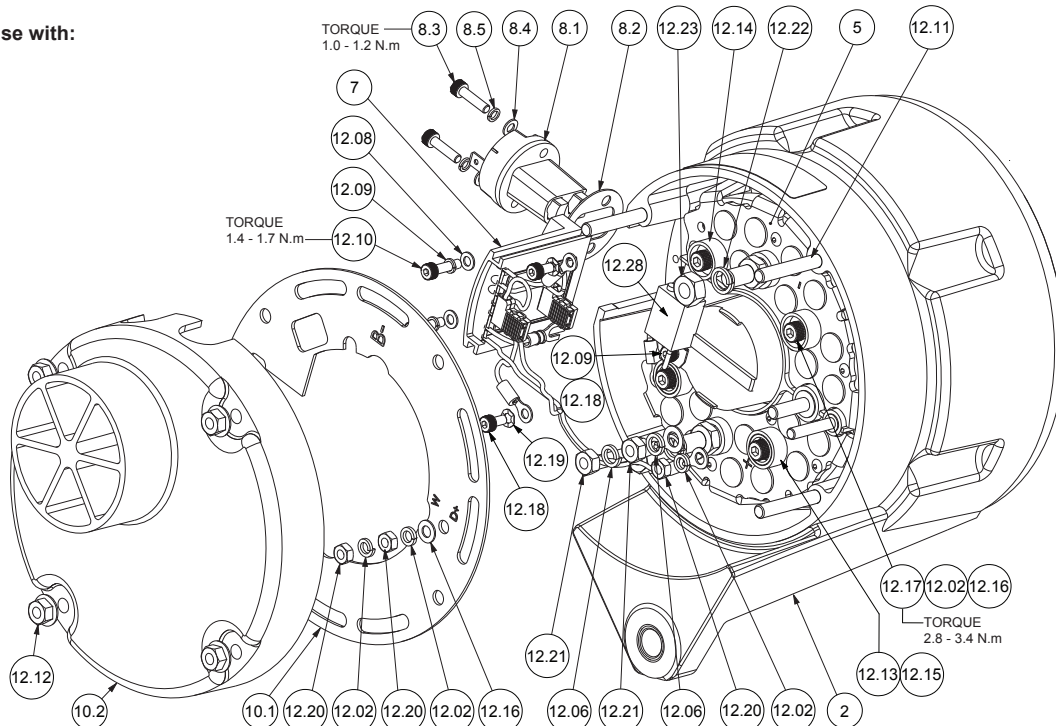
**Exploded view for use with:**

1277640, 1277A640  
1277650, 1277A650  
1277670, 1277A670  
1277680, 1277A680  
1277690, 1277A690  
1277700  
1277A700  
1277710  
1277A710  
1277720  
1277A720  
1277750  
1277A750  
1277760  
1277A760  
1277830  
1277840  
1277A840  
1277860  
1277A860  
1277A870  
1277A880  
1277A890  
860340



**Exploded view for use with:**

1277640  
1277650  
1277670  
1277680  
1277690  
1277700  
1277710  
1277720  
1277750  
1277760  
1277840  
1277860  
860340

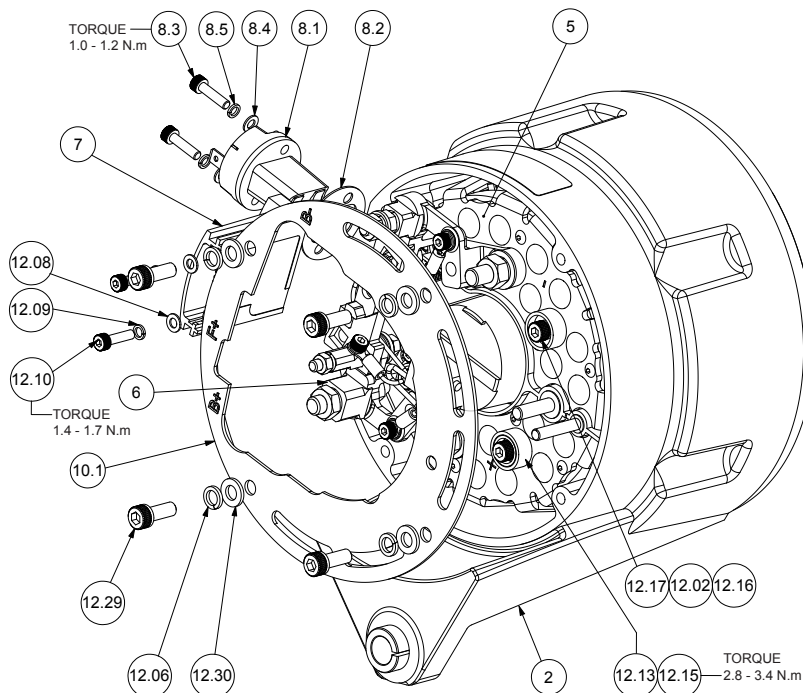


**Important:** The information contained in this bulletin is intended for use by trained, professional technicians who have the proper tools, equipment, and training to perform the required maintenance described above. This information is NOT intended for 'do-it-yourselfers', and you should not assume that this information applies to your equipment. If you have any questions regarding this information please visit our website at [www.prestolite.com](http://www.prestolite.com), or contact our technical service department at:



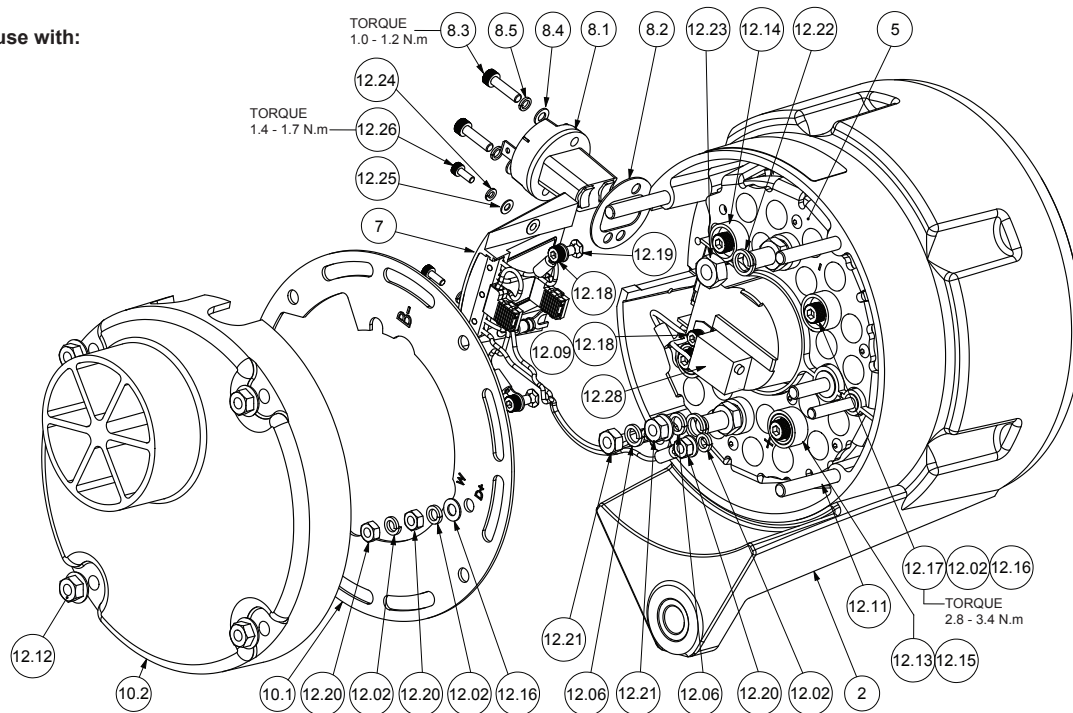
Group:	AC172RA / AC172TRA Alternators	Notes:
Form:	SP4007_AC172RA-TRA_Series	AC172TRA major parts and components exploded view.
Date:	November 7, 2017 (Rev: 1)	
File:	Service parts list section	

**Exploded view for use with:**  
1277830 only



**Exploded view for use with:**

1277A640  
1277A650  
1277A670  
1277A680  
1277A690  
1277A700  
1277A710  
1277A720  
1277A750  
1277A760  
1277A840  
1277A860  
1277A870  
1277A880  
1277A890



**Important:** The information contained in this bulletin is intended for use by trained, professional technicians who have the proper tools, equipment, and training to perform the required maintenance described above. This information is NOT intended for 'do-it-yourselfers', and you should not assume that this information applies to your equipment. If you have any questions regarding this information please visit our website at [www.prestolite.com](http://www.prestolite.com), or contact our technical service department at:

Group:	AC172RA / AC172TRA Alternators	Notes:
Form:	SP4007_AC172RA-TRA_Series	AC172TRA service kits breakdown.
Date:	November 7, 2017 (Rev: 1)	(1277640, 1277A640, 1277650, 1277A650, 1277670, 1277A670, 1277680, 1277A680, 1277690, 1277A690, 1277700, 1277A700, 1277710, 1277A710, 1277720, 1277A720, 1277750, 1277A750, 1277760, 1277A760, 1277830, 1277840, 1277A840, 1277860, 1277A860, 860340)
File:	Service parts list section	

6360-528 (HARDWARE KIT)																																																																																																																																																																																																																																																																																																																																																																																																																																																																																																																																																																																																																																																																																																																																																																																																																																																																																																																																																																																																																																																																																																																																																																																																																																																																																																																																																																																																																																		
-------------------------	--	--	--	--	--	--	--	--	--	--	--	--	--	--	--	--	--	--	--	--	--	--	--	--	--	--	--	--	--	--	--	--	--	--	--	--	--	--	--	--	--	--	--	--	--	--	--	--	--	--	--	--	--	--	--	--	--	--	--	--	--	--	--	--	--	--	--	--	--	--	--	--	--	--	--	--	--	--	--	--	--	--	--	--	--	--	--	--	--	--	--	--	--	--	--	--	--	--	--	--	--	--	--	--	--	--	--	--	--	--	--	--	--	--	--	--	--	--	--	--	--	--	--	--	--	--	--	--	--	--	--	--	--	--	--	--	--	--	--	--	--	--	--	--	--	--	--	--	--	--	--	--	--	--	--	--	--	--	--	--	--	--	--	--	--	--	--	--	--	--	--	--	--	--	--	--	--	--	--	--	--	--	--	--	--	--	--	--	--	--	--	--	--	--	--	--	--	--	--	--	--	--	--	--	--	--	--	--	--	--	--	--	--	--	--	--	--	--	--	--	--	--	--	--	--	--	--	--	--	--	--	--	--	--	--	--	--	--	--	--	--	--	--	--	--	--	--	--	--	--	--	--	--	--	--	--	--	--	--	--	--	--	--	--	--	--	--	--	--	--	--	--	--	--	--	--	--	--	--	--	--	--	--	--	--	--	--	--	--	--	--	--	--	--	--	--	--	--	--	--	--	--	--	--	--	--	--	--	--	--	--	--	--	--	--	--	--	--	--	--	--	--	--	--	--	--	--	--	--	--	--	--	--	--	--	--	--	--	--	--	--	--	--	--	--	--	--	--	--	--	--	--	--	--	--	--	--	--	--	--	--	--	--	--	--	--	--	--	--	--	--	--	--	--	--	--	--	--	--	--	--	--	--	--	--	--	--	--	--	--	--	--	--	--	--	--	--	--	--	--	--	--	--	--	--	--	--	--	--	--	--	--	--	--	--	--	--	--	--	--	--	--	--	--	--	--	--	--	--	--	--	--	--	--	--	--	--	--	--	--	--	--	--	--	--	--	--	--	--	--	--	--	--	--	--	--	--	--	--	--	--	--	--	--	--	--	--	--	--	--	--	--	--	--	--	--	--	--	--	--	--	--	--	--	--	--	--	--	--	--	--	--	--	--	--	--	--	--	--	--	--	--	--	--	--	--	--	--	--	--	--	--	--	--	--	--	--	--	--	--	--	--	--	--	--	--	--	--	--	--	--	--	--	--	--	--	--	--	--	--	--	--	--	--	--	--	--	--	--	--	--	--	--	--	--	--	--	--	--	--	--	--	--	--	--	--	--	--	--	--	--	--	--	--	--	--	--	--	--	--	--	--	--	--	--	--	--	--	--	--	--	--	--	--	--	--	--	--	--	--	--	--	--	--	--	--	--	--	--	--	--	--	--	--	--	--	--	--	--	--	--	--	--	--	--	--	--	--	--	--	--	--	--	--	--	--	--	--	--	--	--	--	--	--	--	--	--	--	--	--	--	--	--	--	--	--	--	--	--	--	--	--	--	--	--	--	--	--	--	--	--	--	--	--	--	--	--	--	--	--	--	--	--	--	--	--	--	--	--	--	--	--	--	--	--	--	--	--	--	--	--	--	--	--	--	--	--	--	--	--	--	--	--	--	--	--	--	--	--	--	--	--	--	--	--	--	--	--	--	--	--	--	--	--	--	--	--	--	--	--	--	--	--	--	--	--	--	--	--	--	--	--	--	--	--	--	--	--	--	--	--	--	--	--	--	--	--	--	--	--	--	--	--	--	--	--	--	--	--	--	--	--	--	--	--	--	--	--	--	--	--	--	--	--	--	--	--	--	--	--	--	--	--	--	--	--	--	--	--	--	--	--	--	--	--	--	--	--	--	--	--	--	--	--	--	--	--	--	--	--	--	--	--	--	--	--	--	--	--	--	--	--	--	--	--	--	--	--	--	--	--	--	--	--	--	--	--	--	--	--	--	--	--	--	--	--	--	--	--	--	--	--	--	--	--	--	--	--	--	--	--	--	--	--	--	--	--	--	--	--	--	--	--	--	--	--	--	--	--	--	--	--	--	--	--	--	--	--	--	--	--	--	--	--	--	--	--	--	--	--	--	--	--	--	--	--	--	--	--	--	--	--	--	--	--	--	--	--	--	--	--	--	--	--	--	--	--	--	--	--	--	--	--	--	--	--	--	--	--	--	--	--	--	--	--	--	--	--	--	--	--	--	--	--	--	--	--	--	--	--	--	--	--	--	--	--	--	--	--	--	--	--	--	--	--	--	--	--	--	--	--	--	--	--	--	--	--	--	--	--	--	--	--	--	--	--	--	--	--	--	--	--	--	--	--	--	--	--	--	--	--	--	--	--	--	--	--	--	--	--	--	--	--	--	--	--	--	--	--	--	--	--	--	--	--	--	--	--	--	--	--	--	--	--	--	--	--	--	--	--	--	--	--	--	--	--	--	--	--	--	--	--	--	--	--	--	--	--	--	--	--	--	--	--	--	--	--	--	--	--	--	--	--	--	--	--	--	--	--	--	--	--	--	--	--	--	--	--	--	--	--	--	--	--	--	--	--	--	--	--	--	--	--	--	--	--	--	--	--	--	--	--	--	--	--	--	--	--	--	--	--	--	--	--	--	--	--	--	--	--	--	--	--	--	--	--	--	--	--	--	--	--	--	--	--	--	--	--	--	--	--	--	--	--	--	--	--	--	--	--	--	--	--	--	--	--	--	--	--	--	--	--	--	--	--	--	--	--	--	--	--	--	--	--	--	--	--	--	--	--	--	--	--	--	--	--	--	--	--	--	--	--	--	--	--	--	--	--	--	--	--	--	--	--	--	--	--	--	--	--	--	--	--	--	--	--	--	--	--	--	--	--	--	--	--	--	--	--	--	--	--	--	--	--	--	--	--	--	--	--	--	--	--	--	--	--	--	--	--	--	--	--	--	--	--	--	--	--	--	--	--	--	--	--	--	--	--	--	--	--	--	--	--	--	--	--	--	--	--	--	--	--	--	--	--	--	--	--	--	--	--	--	--	--	--	--	--	--	--	--	--	--	--	--	--	--	--	--	--	--	--	--	--	--	--	--	--	--	--	--	--	--	--	--	--	--	--	--	--	--	--	--	--	--	--	--	--	--

NOTE: The components listed in kits are not available for individual purchase.

Important: The information contained in this bulletin is intended for use by trained, professional technicians who have the proper tools, equipment, and training to perform the required maintenance described above. This information is NOT intended for 'do-it-yourselfers', and you should not assume that this information applies to your equipment. If you have any questions regarding this information please visit our website at [www.prestolite.com](http://www.prestolite.com), or contact our technical service department at:

Group:	AC172RA / AC172TRA Alternators	Notes:
Form:	SP4007_AC172RA-TRA_Series	AC172TRA & AC172RA service kits breakdown.
Date:	November 7, 2017 (Rev: 1)	
File:	Service parts list section	

### BRUSH KIT (Item 8)

Item no.	Description	Qty
8.1	Brush box	1
8.2	Rubber gasket	1
8.3	Screw (M4 cap, 15 lg)	2
8.4	Flat washer (OD8.1, ID4.2)	2
8.5	Spring washer (OD6.7, ID4.4)	2

NOTE: The components listed in kits are not available for individual purchase.

### BEARING KIT (Item 9)

Item no.	Description	Qty
9.1	Drive end bearing (OD72 , ID29.9)	1
9.2	Slipring end bearing (OD52, ID24.9)	1
9.3	O-ring (OD56.8, ID51.8)	1

### COVER KIT (Item 10)

Item no.	Description	Qty
10.1	Baffle plate	1
10.2	Cover	1

\*Note: For 1277A870, 1277A880 and 1277A890 only a Baffle plate is supplied.

### PULLEY RETENTION KIT (Item 11)

Item no.	Description 6360-531	Qty
11.1	Shaft nut (M24, hex)	1
11.2	Belleville washer (OD44.7, ID24.6)	1
11.3	Key (4.7 wide) Used on 1277730, 1277740, 1277A730, 1277A740, 1277810 and 1277820 only	1
11.4	Key (7.9 wide)	1
11.5	Flat washer (OD50, ID30)	1

### PULLEY RETENTION KIT (Item 11)

Item no.	Description 6360-531A	Qty
11.1	Shaft nut (M27, hex)	1
11.2	Belleville washer (OD46, ID27.5)	1
11.3	Key (4.7 wide) Used on 1277730, 1277740, 1277A730, 1277A740, 1277810 and 1277820 only	1
11.4	Key (7.9 wide)	1
11.5	Flat washer (OD50, ID30)	1

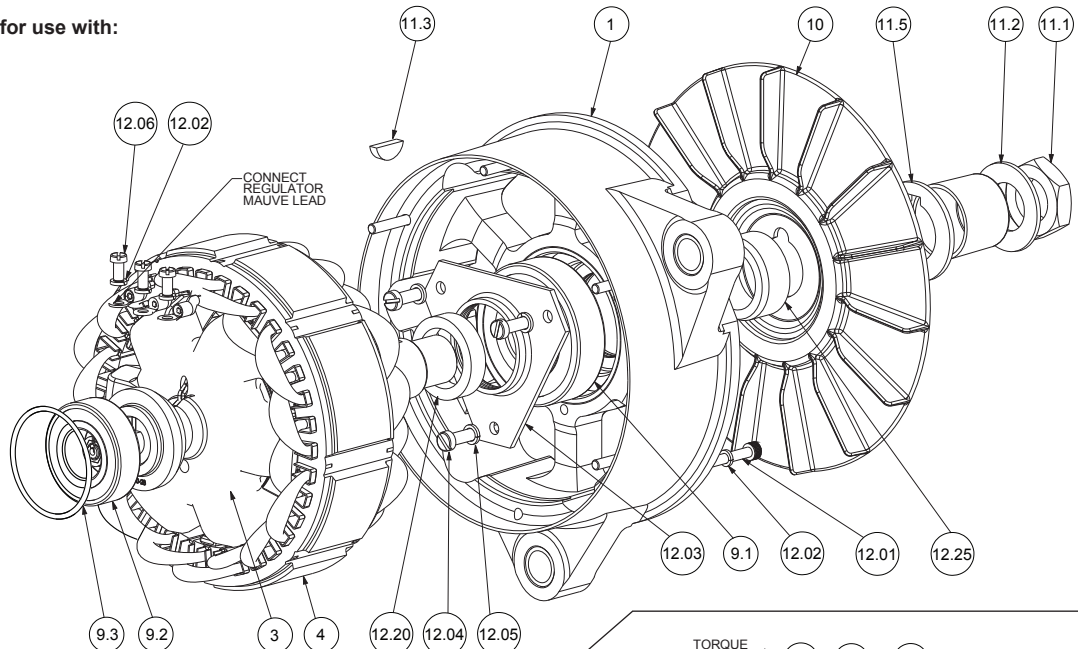
Important: The information contained in this bulletin is intended for use by trained, professional technicians who have the proper tools, equipment, and training to perform the required maintenance described above. This information is NOT intended for 'do-it-yourselfers', and you should not assume that this information applies to your equipment. If you have any questions regarding this information please visit our website at [www.prestolite.com](http://www.prestolite.com), or contact our technical service department at:



Group:	AC172RA / AC172TRA Alternators	Notes:
Form:	SP4007_AC172RA-TRA_Series	AC172RA major parts and components exploded view.
Date:	November 7, 2017 (Rev: 1)	
File:	Service parts list section	

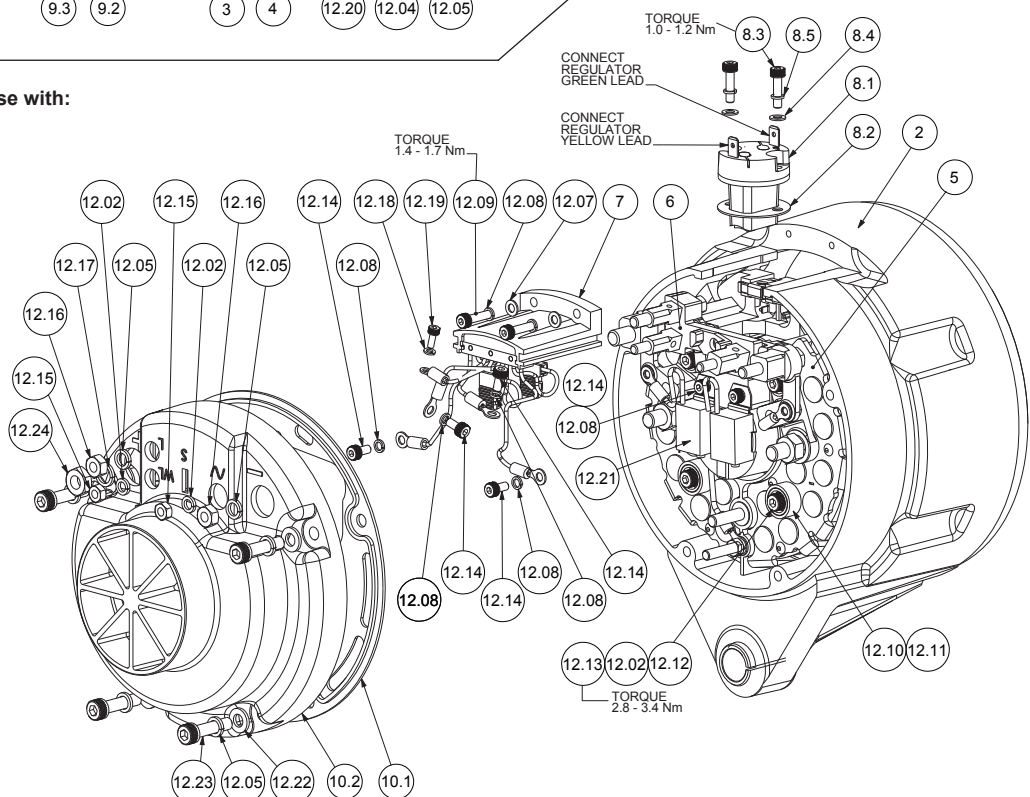
**Exploded view for use with:**

1277730  
1277A730  
1277740  
1277A740  
1277810  
1277820



**Exploded view for use with:**

1277730  
1277740  
1277810  
1277820

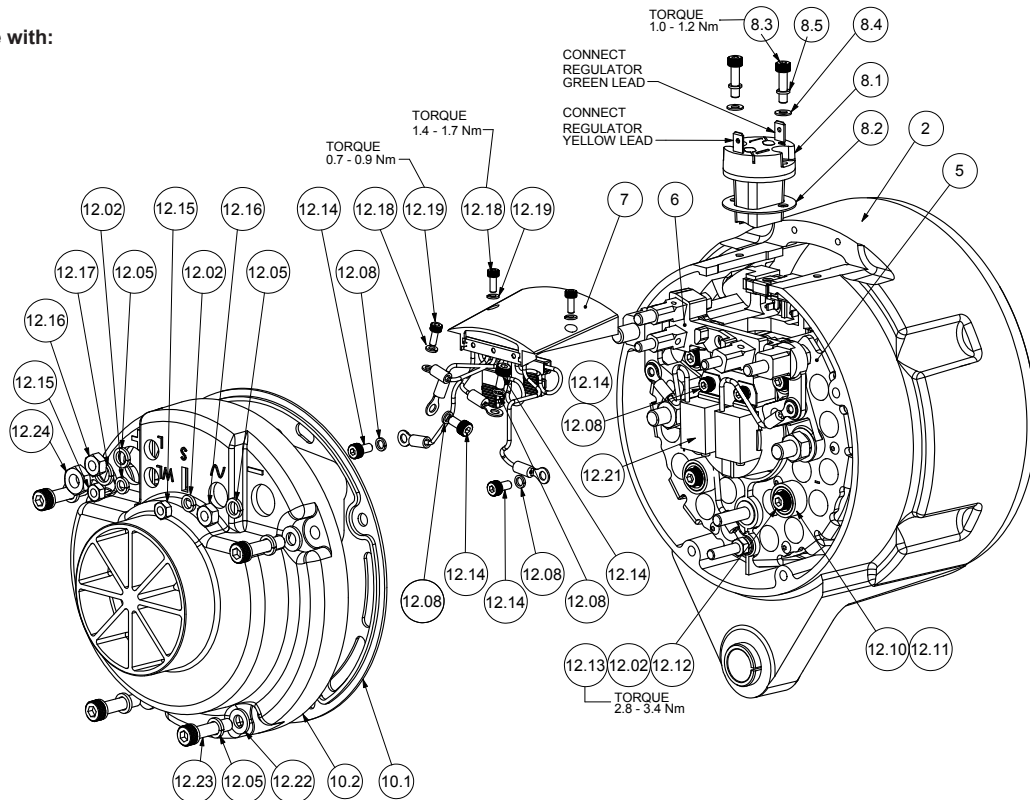


**Important:** The information contained in this bulletin is intended for use by trained, professional technicians who have the proper tools, equipment, and training to perform the required maintenance described above. This information is NOT intended for 'do-it-yourselfers', and you should not assume that this information applies to your equipment. If you have any questions regarding this information please visit our website at [www.prestolite.com](http://www.prestolite.com), or contact our technical service department at:

Group:	AC172RA / AC172TRA Alternators	Notes:
Form:	SP4007_AC172RA-TRA_Series	AC172RA major parts and components exploded view.
Date:	November 7, 2017 (Rev: 1)	
File:	Service parts list section	

**Exploded view for use with:**

1277A730  
1277A740



**Important:** The information contained in this bulletin is intended for use by trained, professional technicians who have the proper tools, equipment, and training to perform the required maintenance described above. This information is NOT intended for 'do-it-yourselfers', and you should not assume that this information applies to your equipment. If you have any questions regarding this information please visit our website at [www.prestolite.com](http://www.prestolite.com), or contact our technical service department at:

Prestolite Electric Ltd  
Unit 48, The Metropolitan Park  
12-16 Bristol Road, Greenford,  
Middlesex  
UB6 8UP, United Kingdom

Tel: +44 (0) 20 8231 1000  
Fax: +44 (0) 20 8575 9575  
[eu\\_info@prestolite.com](mailto:eu_info@prestolite.com)

Group:	AC172RA / AC172TRA Alternators	Notes:
Form:	SP4007_AC172RA-TRA_Series	AC172RA service kits breakdown.
Date:	November 7, 2017 (Rev: 1)	(For 1277730, 1277A730, 1277740, 1277A740, 1277810, 1277820)
File:	Service parts list section	

6360-529 (HARDWARE KIT)			1277730	1277A730	1277740	1277A740	1277810	1277820
Item no.	Description	Kit Qty						
12.01	Through bolt (M5 cap, 45 lg)	6	6	6	6	6	6	6
12.02	Spring washer (OD8.3, ID5.1)	15	15	15	15	15	15	15
12.03	Bearing clamp plate	1	1	1	1	1	1	1
12.04	Screw (M6 slotted, 16 lg)	3	3	3	3	3	3	3
12.05	Spring washer (OD9.8, ID6.6)	9	9	9	9	9	9	9
12.06	Screw (M5 slotted, 10 lg)	3	3	3	3	3	3	3
12.07	Flat washer (OD8.1, ID4.2)	4	4	2	4	2	4	4
12.08	Spring washer (OD6.7, ID4.4)	8	8	6	8	6	8	8
12.09	Screw (M4 cap, 16 lg)	4	4	2	4	2	4	4
12.10	+ve Cup Heatsink	2	2	2	2	2	2	2
12.11	Insulating washer	4	4	4	4	4	4	4
12.12	Flat washer (OD10.1, ID5.0)	4	4	4	4	4	4	4
12.13	Screw (M5 cap, 40 lg)	4	4	4	4	4	4	4
12.14	Screw (M4 cap, 8 lg)	6	6	6	6	6	6	6
12.15	Nut (M5 hex)	2	2	2	2	2	2	2
12.16	Nut (M6 hex)	2	2	2	2	2	2	2
12.17	Spring washer (OD11.9, ID8.7)	1	1	1	1	1	1	1
12.18	Spring washer (OD6.1, ID3.2)	3	1	3	1	3	1	1
12.19	Screw (M3 cap, 8 lg)	3	1	3	1	3	1	1
12.20	Spacer (OD42, ID30.4, TH10)	1	1	1	1	1	1	1
12.21	Suppressor	2	2	2	2	2	2	2
12.22	Washer (OD12, ID6.6)	4	4	4	4	4	4	4
12.23	Screw (M6 cap, 25lg)	4	4	4	4	4	4	4
12.24	Nut (M8 hex)	1	1	1	1	1	1	1
12.25	Fan washer (OD42, ID30, TH14.9)	1	1	1	1	1	1	1

NOTE: The components listed in kits are not available for individual purchase.

BRUSH KIT (Item 8)		
Item no.	Description	Qty
8.1	Brush box	1
8.2	Rubber gasket	1
8.3	Screw (M4 cap, 15 lg)	2
8.4	Flat washer (OD8.1, ID4.2)	2
8.5	Spring washer (OD6.7, ID4.4)	2

BEARING KIT (Item 9)		
Item no.	Description	Qty
9.1	Drive end bearing (OD72 , ID29.9)	1
9.2	Slipring end bearing (OD52, ID24.9)	1
9.3	O-ring (OD56.8, ID51.8)	1

COVER KIT (Item 10)		
Item no.	Description	Qty
10.1	Baffle plate	1
10.2	Cover	1

PULLEY RETENTION KIT (Item 11)		
Item no.	Description	Qty
11.1	Shaft nut (M24, hex)	1
11.2	Belleville washer (OD44.7, ID24.6)	1
11.3	Key (4.7 wide) Used on 1277730, 1277740, 1277A730, 1277A740, 1277810 and 1277820 only	1
11.4	Key (7.9 wide)	1
11.5	Flat washer (OD50, ID30)	1

Important: The information contained in this bulletin is intended for use by trained, professional technicians who have the proper tools, equipment, and training to perform the required maintenance described above. This information is NOT intended for 'do-it-yourselfers', and you should not assume that this information applies to your equipment. If you have any questions regarding this information please visit our website at [www.prestolite.com](http://www.prestolite.com), or contact our technical service department at: